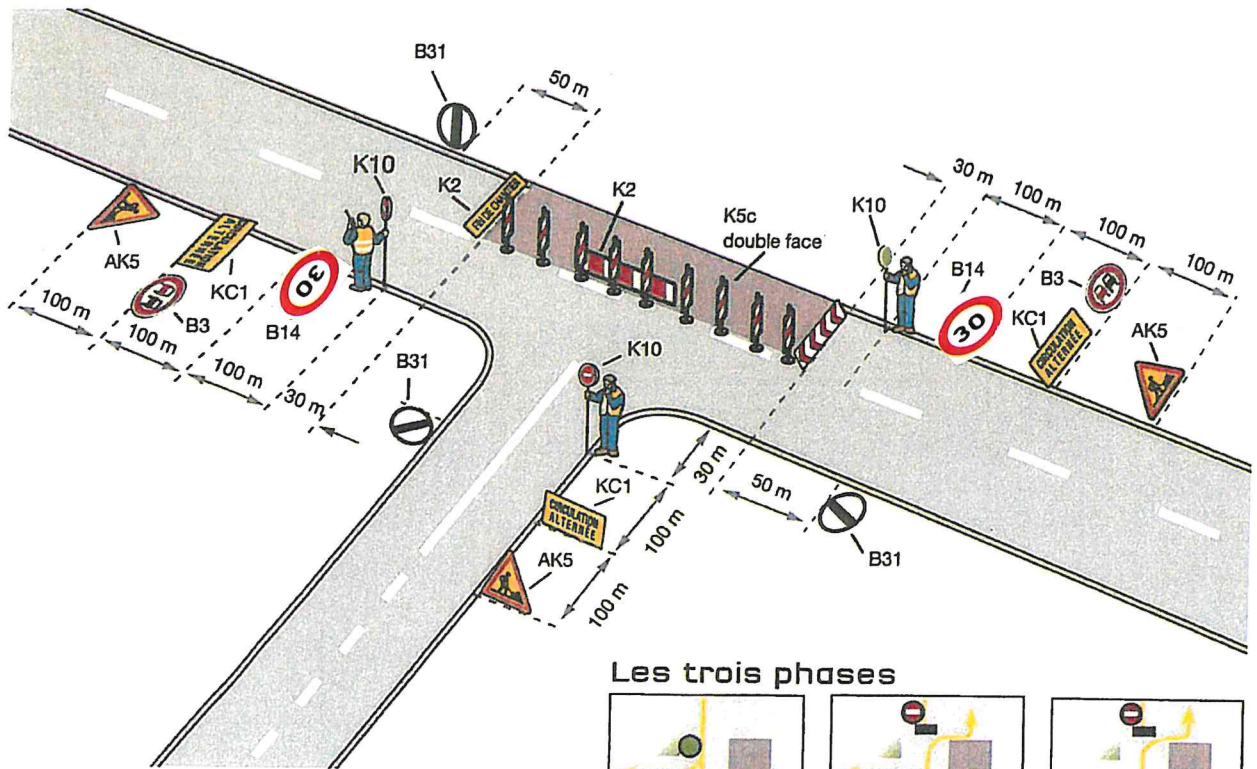
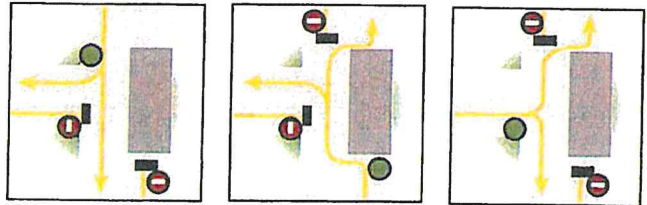


# RC 7









## Circulation alternée au droit du carrefour



### Les trois phases



### Inventaire des panneaux

- |   |   |   |   |
|---|---|---|---|
|  |  |  |  |
| x 3   | x 3   | x 2   | x 2   |
|  |  |  |  |
| x 3   | x 3   | x 1   | x   |
|   |   |   |  |
|   |   |   | x 2   |

### Remarque

- Un panneau B14 vitesse 70 km/h peut être éventuellement intercalé entre les panneaux AK5 et KC1 situés sur la route en alignement droit.

le 07/10/2022  
 FGC  
 72, rue de Longjumeau  
 91160 BALAINVILLIERS  
 Tél. 01 69 07 91 56 - 06 08 52 78 28  
 791 983 844 RCS EVRY